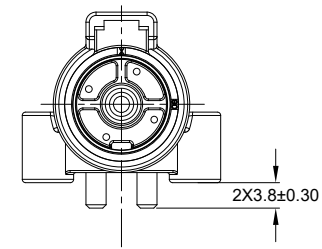
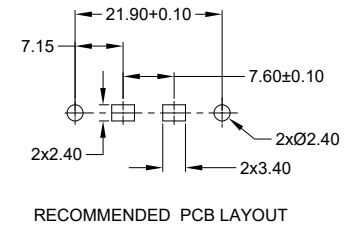
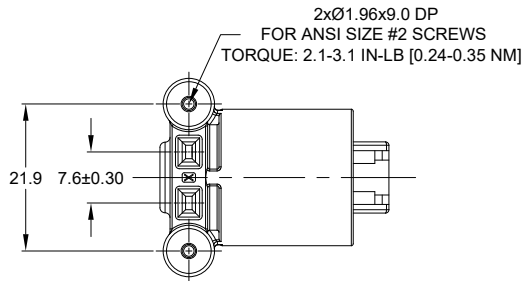


REVISIONS					
REV	ECO	DESCRIPTION	DATE	BY	APPR
A1	-	RELEASED DRAWING	MAY-10-21	VITO	TOMMY



NOTES: UNLESS OTHERWISE SPECIFIED

- MATERIAL:
HOUSING: THERMOPLASTIC; COLOR:BLACK
CONTACT: COPPER ALLOY
SEAL:SILICONE RUBBER
- MODIFICATIONS :RIGHT ANGLE PCB MOUNT ,SCREW BOSS
- SPECIFICATIONS:
3.1 CURRENT RATING: 60 AMPS
3.2 OPERATING TEMPERATURE: -55°C TO +125°C
3.3 DIELECTRIC WITHSTANDING VOLTAGE: LESS THAN 2 MILLIAMPS CURRENT LEAKAGE @ 1500 VOLTS AC.
3.4 INSULATION RESISTANCE: 1000 MEGOHMS MIN @ 25°C.
3.5 MOISTURE RESISTANCE: IP67&IP69K (MATED CONDITION)
3.6 MATING CYCLE DURABILITY: 100 CYCLES
3.7 RoHS COMPLIANT
- MATING PART:ATHD06-1-8S-XX PLUG(XX = MODIFICATIONS)
- ALL DIMENSIONS ARE FOR REFERENCE USE ONLY.



ATFHDD13-1-8P-BM1X VARIANTS		
CONTACT PLATING	PART NUMBER	WEIGHT (GRAMS)
MATING END: GOLD PCB END: TIN	ATFHDD13-1-8P-BM11	13.1
MATING END: NICKEL PCB END: TIN	ATFHDD13-1-8P-BM13	13.1

ATFHDD13-1-8P-BM1X		DESCRIPTION		ITEM
QUANTITY	PART NUMBER	MATERIALS LIST		
UNLESS OTHERWISE SPECIFIED: 1) All dimensions are in metric(mm). 2) Tolerances are as follows: 1 PL DEC ±0.30 2 PL DEC ±0.15 3 PL DEC ±0.08 Fractions ±1/64 Angles ±1°		SIGNATURES		DATE
3) Note reference =		DRAWN: VITOLI		MAY-10-21
MATERIAL SPECIFICATIONS:		CHECKED: ORION LI		MAY-12-21
PROCESS SPECIFICATIONS:		APPROVAL: TOMMY XIE		MAY-13-21
NEXT ASSY:		CUSTOMER:		
THIS DRAWING IS SUPPLIED FOR INFORMATION ONLY. DESIGN FEATURES, SPECIFICATIONS AND PERFORMANCE DATA SHOWN HEREON ARE THE PROPERTY OF THE AMPHENOL CORPORATION. NO RIGHTS OF REPRODUCTION ARE IMPLIED. ALL DIMENSIONS ARE SUBJECT TO NORMAL MANUFACTURING VARIATIONS.		 Sine Systems - www.amphenol-sine.com 44724 Morley Drive Clinton Township, MI 48036		REVISION
SCALE: NONE		1 POS,RIGHT ANGLE RECEPTACLE,PIN, BOARDLOCK,ATHD SERIES,SIZE 8,SCREW BOSS		SIZE: B TYPE: C- DWG NO: ATFHDD13-1-8P-BM1X REVISION: A1
SHEET 1 OF 1				

TITLE: 1 POS,RIGHT ANGLE RECEPTACLE,PIN,ATHD SERIES,SIZE 8,SCREW BOSS
DWG NO: ATFHDD13-1-8P-BM1X
REV: A1
SH: 1
OF: 1