

## Han 24 HPR Base Panel for Central Lever

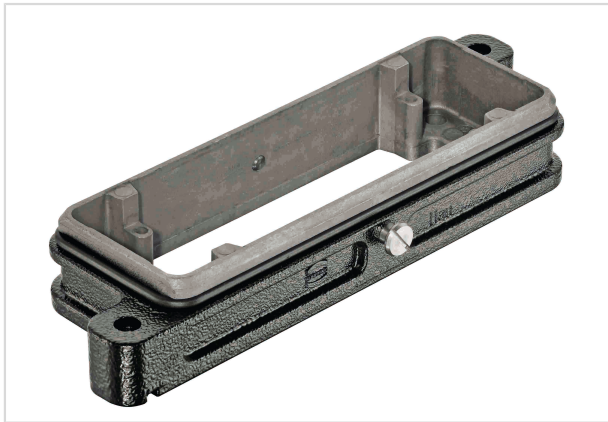


Image is for illustration purposes only. Please refer to product description.

|               |   |
|---------------|---|
| Part number   | 09 40 024 0382                          |
| Specification | Han 24 HPR Base Panel for Central Lever |

### Identification

|                          |                          |
|--------------------------|--------------------------|
| Category                 | Hoods/Housings           |
| Series of hoods/housings | Han <sup>®</sup> HPR     |
| Type of hood/housing     | Bulkhead mounted housing |

### Version

|                      |   |
|----------------------|---|
| Size                 | 24 B  |
| Locking type         | Central locking lever (on the hood)           |
| Field of application | Hoods/housings for harsh outdoor environments |

### Technical characteristics

|  |                                |
|--|--------------------------------|
| Limiting temperature                   | -40 ... +125 °C                |
| Degree of protection acc. to IEC 60529 | IP65                           |
|  | IP68                           |
|  | IP69 / IPX9K acc. to ISO 20653 |
| Type rating acc. to UL 50 / UL 50E     | 4                              |
|  | 4X                             |
|  | 12                             |

### Material properties

|                         |   |
|-------------------------|---|
| Material (hood/housing) | Aluminium die-cast<br>Corrosion resistant |
| Surface (hood/housing)  | Powder-coated                             |
| Colour (hood/housing)   | RAL 9005 (jet black)                      |
| Material (seal)         | NBR                                       |
| Material (locking)      | Stainless steel                           |



Pushing Performance  
Since 1945

## Material properties

|                                      |  |
|--------------------------------------|--|
| RoHS                                 | compliant                                    |
| ELV status                           | compliant                                    |
| China RoHS                           | e  |
| REACH Annex XVII substances          | Not contained                                |
| REACH ANNEX XIV substances           | Not contained                                |
| REACH SVHC substances                | Yes  |
| REACH SVHC substances                | 6,6'-di-tert-butyl-2,2'-methylenedi-p-cresol |
| California Proposition 65 substances | Yes  |
| California Proposition 65 substances | Nickel<br>Naphthalene                        |
| Fire protection on railway vehicles  | EN 45545-2 (2020-08)                         |
| Requirement set with Hazard Levels   | R1 (HL 1-3)<br>R7 (HL 1-3)                   |

## Specifications and approvals

|           |  |
|-----------|--|
| Approvals | DNV GL   |
| UL / CSA  | UL 1977 ECBT2.E235076<br>CSA-C22.2 No. 182.3 ECBT8.E235076 |
| CE        | Yes  |

## Commercial data

|                                |  |
|--------------------------------|--|
| Packaging size                 | 1  |
| Net weight                     | 200.4 g                                  |
| Country of origin              | Germany                                  |
| European customs tariff number | 85389099                                 |
| eCl@ss                         | 27440202 Shell for industrial connectors |