

Evaluating the **SSM4567** Digital 2.5 W, 5.1 V, Boost Class-D Audio Amplifier

FEATURES

I²S/PDM/TDM/optical digital audio input
Full featured evaluation board for the **SSM4567**
PCB footprint for optional EMI filter
Includes the **EVAL-ADUSB2EBZ** USB hardware interface
for plug-and-play operation
Microsoft Windows-based evaluation software with
simple graphical user interface

EQUIPMENT REQUIRED

Audio source with optical fiber or 10-pin 0.100" digital
audio header
Power supply (5.0 V, 2.0 A recommended)
EVAL-SSM4567Z evaluation board
USB-to-I²C adapter dongle, **EVAL-ADUSB2EBZ**
PC running Windows XP or later; USB 2.0 port required
Speaker or other load

DOCUMENTS REQUIRED

SSM4567 data sheet

OPTIONAL SOFTWARE

SigmaStudio software

GENERAL DESCRIPTION

The **SSM4567** evaluation board is a complete solution for driving loudspeakers with boosted battery power supply as well as sense output current, output voltage, and the VBAT supply voltage. It includes the **SSM4567** amplifier IC and the additional components needed to connect the digital audio input and optical fiber.

The **SSM4567** combines an audio digital-to-analog converter (DAC), a power amplifier, and PDM or PCM (I²S/TDM) digital audio interfaces on a single chip. Using the **SSM4567**, audio can be transmitted digitally to the audio amplifier, significantly reducing the effect of noise sources on the transmitted audio and eliminating the need for input coupling capacitors. The **SSM4567** is capable of delivering 2.5 W of continuous output power with <1% THD + N driving a 4 Ω load from a 3.6 V supply.

The **SSM4567** can be controlled by I²C, PDM pattern control, or TDM control. It can also operate in standalone mode without a control interface.

The **SSM4567** includes circuitry to sense output current, output voltage, and the VBAT supply voltage. Current sense is performed using an on-chip sense resistor that is connected between an output pin and the load. Output current and voltage are sent to ADCs. The output of these ADCs are available on the digital serial output port. The VBAT supply voltage can be used with an automatic gain control circuit that is fully configurable. This AGC can limit the maximum output at low battery voltages to avoid current that is too high off the battery.

This user guide describes how to use the **EVAL-SSM4567Z** to test the features of the **SSM4567** amplifier. It describes the hardware and software of the **SSM4567** evaluation board, including detailed schematics and PCB layout artwork.

The **SSM4567** data sheet provides detailed information about the specifications, internal block diagrams, and application guidance for the amplifier IC.

TABLE OF CONTENTS

Features	1	PDM Channel Selection	6
Equipment Required	1	PCM Mode Pin Setup and Control	6
Documents Required	1	Evaluation Board Software Quick Start Procedures	7
Optional Software	1	Hardware Only Quick Start	7
General Description	1	SSM4567 Control Software Setup	7
Revision History	2	SSM4567 USB Driver Installation	7
Evaluation Board Overview	3	Software Instructions	7
Evaluation Board Hardware	4	Passive Component Selection	10
Power Supplies	4	Output Ferrite Beads (FB5 to FB6)	10
Input Signals	4	Output Shunting Capacitors (C26 AND C27)	10
Audio Amplifier Output Signal	4	Evaluation Board Schematics and Artwork	11
Sense Output Signals	5	Ordering Information	21
PDM Control Mode	6	Bill of Materials	21

REVISION HISTORY

6/14—Revision 0: Initial Version

The [SSM4567](#) evaluation board provides all of the support circuitry required to operate the [SSM4567](#) amplifier. Figure 1 shows an overview while Figure 2 shows the typical bench characterization setup used to evaluate the audio performance of the [SSM4567](#). See the Evaluation Board Software Quick Start Procedures section to get started.



Figure 1. Evaluation Board Overview



Figure 2. Default Quick Start Setup

EVALUATION BOARD HARDWARE

POWER SUPPLIES

The [SSM4567](#) requires two power supplies, VBAT and IOVDD. VBAT voltages can be between 2.5 V and 5.0 V. The IOVDD power supply must be 1.8 V. The [EVAL-SSM4567Z](#) has three external dc power supply connections: VBAT (J3), VDD_REG (J2), and EXT_IOVDD (J5). The [EVAL-SSM4567Z](#) has voltage regulators on the board that can be isolated or bypassed to allow for current measurements only for the [SSM4567](#). Note that VBAT supply currents may exceed 2 A, depending on supply voltage and load impedance.

The VBAT input can be configured to supply all the voltages required for the evaluation board to function.

VDD_REG is used to provide on-board 3.3 V and 1.8 V power supply by LDOs ([ADP1711](#)). It can share the input with VBAT by shorting J23, but VBAT must be higher than 3.5 V. If VBAT input is lower than 3.5 V, VDD_REG should be provided independently and be between 3.5 V and 5.0 V. The 1.8 V output from the on-board LDO can supply IOVDD for the [SSM4567](#) or the EXT_IOVDD terminal, J5, can supply IOVDD. J8 is used to select between the internal LDO or the external terminal J5.

Note that the 3.3 V regulator is used to supply power to the SPDIF input circuitry. There are on-board level shifters to translate the signals to 1.8 V levels.

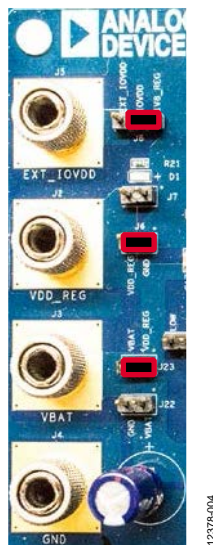


Figure 3. Power Input Terminals and Default Jumper Settings. VBAT Only Using Internal Regulators for IOVDD and 3.3 V.

INPUT SIGNALS

On the right side of the PCB are two 10-pin headers: J25 and J26. One header is used to connect the digital input audio signals to the amplifier and the other can be used to connect to other [EVAL-SSM4567Z](#) boards to enable the testing of multichip mode.

The two connectors are wired together in parallel so that they can be used interchangeably (see Figure 4).

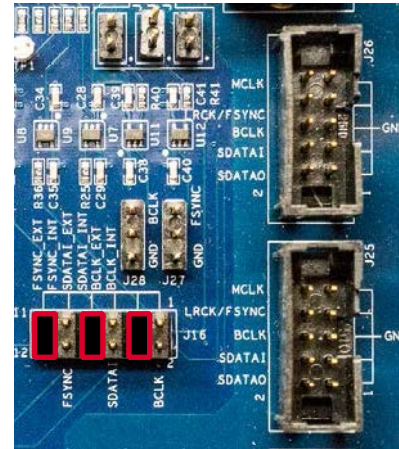


Figure 4. Jumper Configuration for Clock and Data Input from J25 and J26

For a direct connection from an external circuit using the I²S headers, J25 and J26, the logic level inputs are at 1.8 V. A level shifter is required at the sending circuit for these inputs to operate at a different level.

The [EVAL-SSM4567Z](#) board also supports I²S input from an optical fiber port using the SPDIF format. The jumpers on J16 select the digital input from either the internal SPDIF interface or the external I²S signals from J25/J26 (see Figure 5).

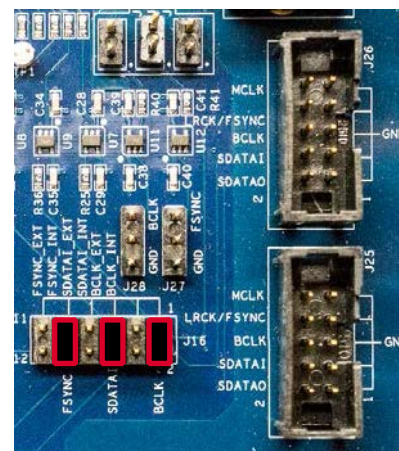


Figure 5. Jumper Configuration for Clock and Data Input from the SPDIF Receiver

AUDIO AMPLIFIER OUTPUT SIGNAL

The amplifier output is available at two 2-pin 0.100" headers: J10 and J11. The speaker is connected in bridge-tied load (BTL) configuration, and the output pins are labeled with their polarity. For example, OUTP indicates the noninverting terminal (see Figure 6).

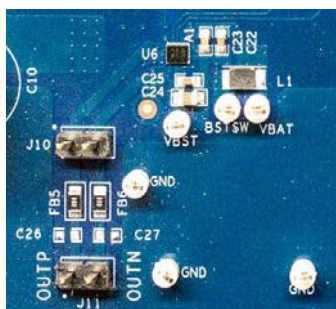


Figure 6. Amplifier Output Connectors

In the standard filterless configuration, the two headers are connected with 0 Ω links on the pads marked FB5 and FB6. In this case, the two headers are tied together and can be used interchangeably as attachment points for the load and an audio analyzer. The EMI filtering is not populated on the [EVAL-SSM4567Z](#) evaluation board to allow proper measurement of key parameters, such as SNR and THD.

A ferrite bead-based EMI filter can be implemented using FB5 and FB6 with C26 and C27 footprints. If this filtering is used, only J11 connects at the proper location with respect to the filter components—the load must be connected to this header. Measurements of the unfiltered waveform can be taken at J10.

Note that measuring of Class-D amplifier outputs with standard audio test equipment does not yield proper results. Switching amplifier filters, such as the Audio Precision AUX-0025 or the AUX-0100, filters the amplifier output and allows the proper measurement of the amplifier.

SENSE OUTPUT SIGNALS

The [SSM4567](#) can output voltage, current, and battery level sensing data of the Class-D amplifier via I²S/PDM/TDM format. The output data is available (SDATAO) on J25 and J26. The logic level outputs on J25 and J26 are at a 1.8 V level so a level shifter is required at the receiving circuit.

There is an on-board level shifting circuit for the SDATAO signal. The level can be 3.3 V originating from the internal 3.3 V regulator or an external source can feed the level translator. J19 selects the level between the internal 3.3 V or an external level can be injected using Pin 2 of J19. Note that Pin 3 of J19 is not connected to any signals on the board (NC).

The input of the level shifter is selected using J29. Installing a jumper on Pin 1 and Pin 2 connects the SDATAO signal to the level shifter. The output of the level shifter appears on J15. Pin 1 is the shifted SDATAO signal and Pin 2 is ground. When not using the level shifter, it is recommended that the input be grounded by inserting a jumper between Pin 2 and Pin 3 of J29 (see Figure 7).

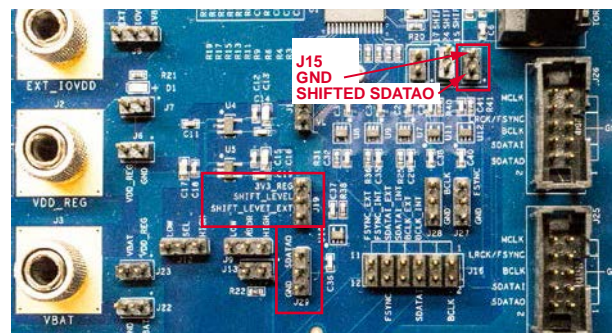


Figure 7. SDATAO Jumpers and Connections Mode Selection Pins

The [SSM4567](#) can operate in many different modes based on the state of several multifunction pins. The [EVAL-SSM4567Z](#) board has the capability to set the pins to different levels thereby changing the operating mode of the [SSM4567](#).

Table 1. Mode Pin Header Descriptions

Mode Pin Header	Description
J12	SEL Pin
J9	LR_SEL/ADDR Pin
J20	SCL Pin
J21	SDA Pin
J13	47 k Ω bypass jumper

The settings for these pins on the evaluation board are labeled as low or high where low = ground and high = IOVDD. The LR_SEL/ADDR Pin has five functions so it needs to be able to be set at five different levels: ground, IOVDD, floating, pulled up to IOVDD, or pulled down to ground via a 47 K Ω resistor. This is where J13 can bypass the resistor to allow the pin to be pulled high or low. When J13 is removed, the pin is pulled up or down through R22.

Jumper J20 and Jumper J21 are on the SDA and SCL pins. To communicate with the [SSM4567](#) via I²C, these jumpers must be removed. These jumpers are for options when operating the part in standalone modes where communication with the part is not required.

The following sections detail the use of these jumpers. See Figure 8 for the jumper locations.

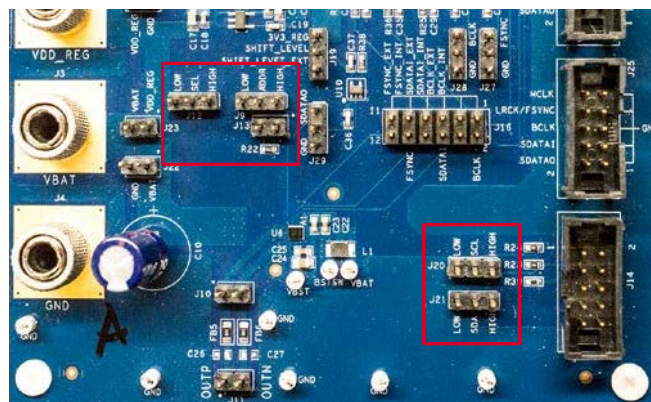


Figure 8. Mode Selection Jumper Locations

PDM CONTROL MODE

The [SSM4567](#) can boot up in PDM control mode. Powering up, or resetting, the part while the SEL pin, J12, is tied low places the part in PDM audio and pattern control mode. In this mode, several functions are controlled via PDM pattern control. I²C remains available, but registers that are controlled via PDM do not respond to I²C control and the proper state of the part is not reflected when the registers are read. For full I²C control, SEL, J12, must be tied high, then placed into PDM mode using I²C writes. Refer to the [SSM4567](#) data sheet for more details.

PDM CHANNEL SELECTION

The [SSM4567](#) includes a left/right input select pin, LR_SEL/ADDR, J9 is used to determine which of the time-multiplexed input streams is routed to the amplifier when using PDM pattern control mode. The connection to this pin is via the jumpers labeled ADDR on the [EVAL-SSM4567Z](#) board. To select the left input channel, connect LR_SEL/ADDR low. To select the right channel data, connect LR_SEL/ADDR to high. At any point during amplifier operation, the logic level applied to LR_SEL/ADDR may be changed and the output switches between input streams without audible artifacts. Aside from your logic level selection, no muting, watermarking pattern, or synchronizing are necessary to achieve a click/pop free LR_SEL/ADDR transition.

Table 2. LR_SEL/ADDR Function Descriptions

Device Setting	LR_SEL/ADDR Pin Configuration
Right Channel Select	High (IOVDD)
Left Channel Select	Low (GND)

Table 3. PCM Mode Pin Setup

LR_SEL/ADDR	SCL	SDA	Control Mode	I ² C Control Address	TDM Slot
STANDALONE	SCL	SDA	I ² C	0	1
IOVDD	SCL	SDA	I ² C	1	2
Open	SCL	SDA	I ² C	2	3
Pull-Up	0	0	Standalone (TDM interface)	NA	1
Pull-Up	0	1	Standalone (TDM interface)	NA	2
Pull-Up	1	0	Standalone (TDM interface)	NA	3
Pull-Up	1	1	Standalone (TDM interface)	NA	4
Pull-Up	Boost power down (active low)	Shutdown (active low)	Standalone (I ² S interface)	NA	NA
Pull-Down	0	0	TDM	NA	1
Pull-Down	0	1	TDM	NA	2
Pull-Down	1	0	TDM	NA	3
Pull-Down	1	1	TDM	NA	4

PCM MODE PIN SETUP AND CONTROL

When the SEL pin is tied to IOVDD, the [SSM4567](#) is set for PCM mode operation. In this mode, the [SSM4567](#) supports standalone operation, I²C control, or control using commands sent over the input serial audio/TDM interface. See Figure 9 for the location of J14, the serial port, and the jumpers associated with the port. Note that the J20 and J21 jumpers must be removed when I²C communication to the part is desired.

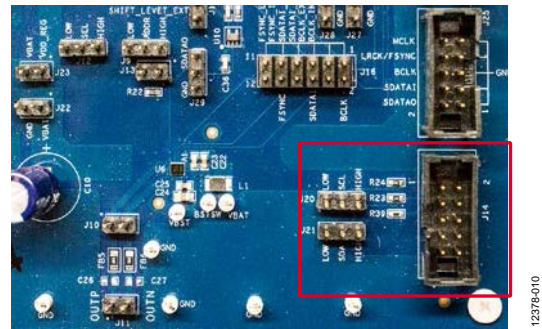


Figure 9. Serial Port and Jumper Location

When the LR_SEL/ADDR pin is pulled up via a 47 kΩ resistor (J9 set high and J13 removed), the IC operates in a standalone mode with most registers set to their default states.

The state of these several pins can change the functionality of other pins. The LR_SEL/ADDR pin determines the I²C device address. In standalone and TDM control modes, the SCL and SDA pins are used to determine the TDM slot used (J20 and J21). For details, see the data sheet or refer to Table 3.

EVALUATION BOARD SOFTWARE QUICK START PROCEDURES

HARDWARE ONLY QUICK START

The evaluation board comes configured for single 3.5 V to 5 V dc input, 48 kHz optical SPDIF input, and standalone operation mode of the [SSM4567](#). To operate the board with this quick start configuration

1. Connect power to J3 and J4.
2. Connect the speaker load to J11.
3. Connect the optical SPDIF cable to the optical jack.
4. Apply power to the evaluation board.
5. Start the SPDIF digital audio stream.
6. Press the SPDIF reset switch, S1.

See Figure 2 for the jumper settings.

SSM4567 CONTROL SOFTWARE SETUP

Do not connect the USBi ([EVAL-ADUSB2EBZ](#)) to the computer until the software is installed. The [SSM4567](#) software interface (SigmaStudio™) requires Microsoft® .NET Framework (Version 2.0 or later). The installer automatically downloads it if .NET Version 2.0 is not previously installed.

A graphical user interface for the [SSM4567](#) has been created in the Analog Devices, Inc., [SigmaStudio](#) environment. SigmaStudio must first be [downloaded](#) and installed on your PC.

SSM4567 USB DRIVER INSTALLATION

Before connecting the USBi ([EVAL-ADUSB2EBZ](#)) evaluation board to a PC or notebook, the following procedure may need to be completed. (This procedure only needs to be executed once on each computer that uses the [SSM4567](#) software. Skip this procedure if you previously installed any SigmaStudio or USBi related drivers from Analog Devices.)

Ensure that the Cypress (CYUSB) USB driver is installed during the SigmaStudio installation. If you need to verify installation, you can find the driver on your computer in this location:

C:\Program Files\Analog Devices\SigmaStudio x.x\USB drivers\x86 (or x64)\dpinst.exe

Note that the parentheses indicate alternate folder names depending on your hardware. In addition, x.x refers to the version of SigmaStudio installed.

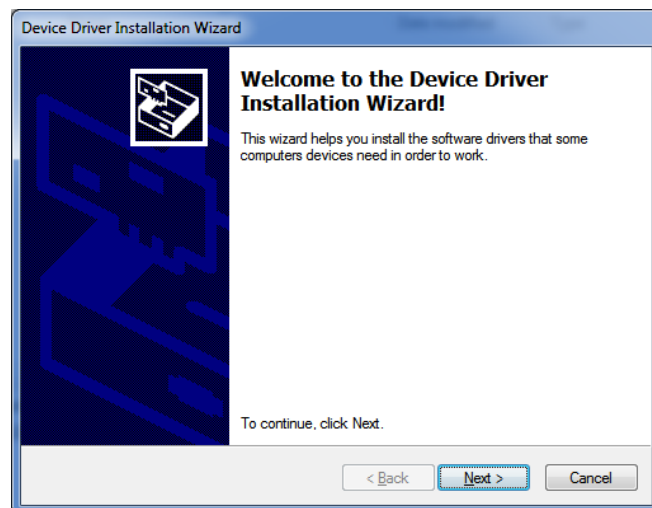


Figure 10. Device Driver Installation Wizard

INITIAL SSM4567 HARDWARE SETUP

To allow the [SSM4567](#) software to control the [SSM4567](#) evaluation board, make a few simple jumper connections as follows:

1. Connect the SEL to HIGH (J12) and ADDR to LOW (J9), and short R22 (install J13). The purpose of this is to set the [SSM4567](#) to work under I²C control mode.
2. Remove any jumpers on J20 and J21.
3. Install jumpers on J16 to select the digital audio input to the [SSM4567](#) from either an external source or the SPDIF input. The SPDIF input signals are labeled as INT (internal). See Figure 4 or Figure 5 for details.

SOFTWARE INSTRUCTIONS

Complete the following instructions after SigmaStudio and the USBi driver installation.

1. Connect the [EVAL-ADUSB2EBZ](#) to your PC using the USB cable.
2. Launch SigmaStudio on the PC.
3. Click **File>New Project** to start a new GUI project file, and then find USBi under **Communication Channels**.



Figure 11. Location of USBi GUI

4. Drag and drop USBi to the **Hardware Configuration**.

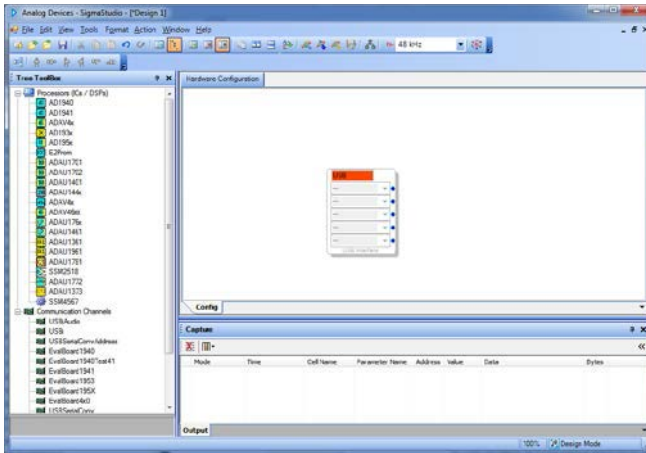


Figure 12. Project with the USBi GUI Inserted

If SigmaStudio cannot detect the USBi on the USB port of the computer, then the background of the USB label is red. This may happen when the USBi is not connected or when the drivers are incorrectly installed.



Figure 13. USBi GUI when USBi Hardware is Not Found

If SigmaStudio detects the USBi on the USB port of the computer, the background of the USB label changes to orange.

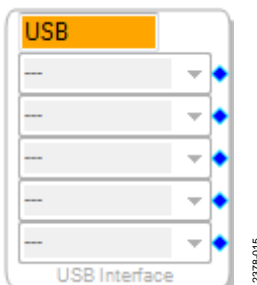


Figure 14. USBi GUI when USBi Hardware is Located

5. After launching SigmaStudio, follow this sequence to initiate the [SSM4567](#) GUI:
 - a. Copy the [SSM4567.dll](#) to C:\Program Files\Analog Devices\SigmaStudio 3.7.
 - b. From the main SigmaStudio window, click **Tools>Add-Ins Browser...>Add DLL** and browse to locate the [SSM4567.dll](#) you copied to in Step 5a and then click **Save**. This loads the [SSM4567](#) as a processor in SigmaStudio.

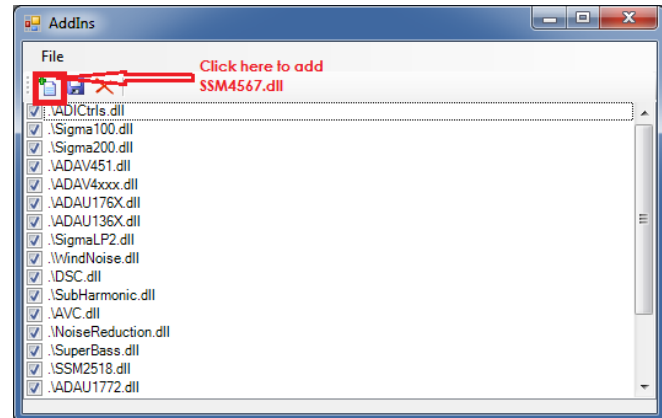


Figure 15. Adding a Processor DLL Using the AddIns Tool

- c. From the main SigmaStudio window, click **File>New Project** to start a new GUI project file.
 - d. Drag **USBi** and [SSM4567](#) from the tree toolbox to the **Hardware Configuration** window, and connect one blue pin of USBi to the green pin of the [SSM4567](#) by clicking and dragging a wire as shown in Figure 16.

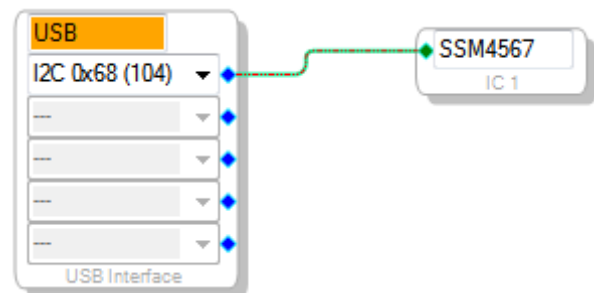


Figure 16. USBi to SSM4567 Communications Connection

- e. Click the **IC 1-SSM4567 v1.8** tab from the **Hardware Configuration** tab to open the [SSM4567](#) GUI.

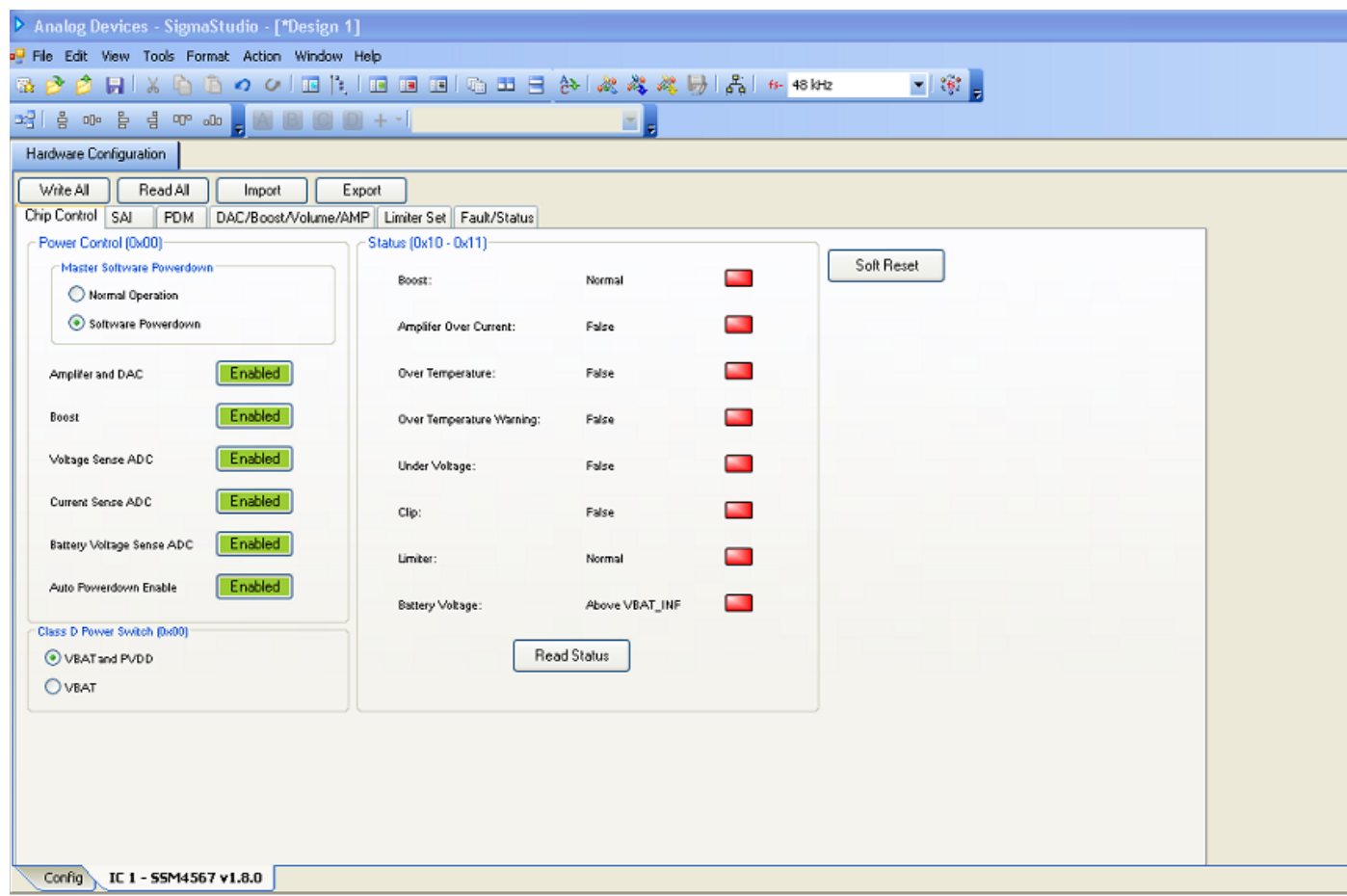


Figure 17. SSM4567Z Evaluation Software GUI

PASSIVE COMPONENT SELECTION

Although the evaluation board is preloaded with the passive components required for a basic configuration, the same circuit can be evaluated with different component values or filter designs. Selecting the proper components is the key to achieving the performance required at the budgeted cost.

OUTPUT FERRITE BEADS (FB5 TO FB6)

The output beads, FB5 to FB6, are suggested components for filtering out the EMI caused at the switching output nodes. The penalty for using ferrite beads for EMI filtering is slightly worse noise and distortion performance at the system level due to the nonlinearity of the beads. Ensure that these beads have enough current conducting capability while providing sufficient EMI attenuation. The current rating needed for an $8\ \Omega$ load is approximately 420 mA, and impedance at 100 MHz must be $\geq 120\ \Omega$. In addition, the lower the dc resistance (DCR) of these beads, the better for minimizing their power consumption. Table 4 describes suggested beads.

Table 4. Suggested Output Beads

Part No.	Manufacturer	Z (Ω)	I _{MAX} (mA)	DCR (Ω)	Size (mm)
BLM18PG121SN1D	Murata	120	2000	0.05	1.6 × 0.8 × 0.8
MPZ1608S101A	TDK	100	3000	0.03	1.6 × 0.8 × 0.8
MPZ1608S221A	TDK	220	2000	0.05	1.6 × 0.8 × 0.8
BLM18EG221SN1D	Murata	220	2000	0.05	1.6 × 0.8 × 0.8

OUTPUT SHUNTING CAPACITORS (C26 AND C27)

There are two output shunt capacitors, C26 and C27, that work with the FB5 to FB6 ferrite beads, if they are used. Use small size (0603 or 0402), multilayer ceramic capacitors that are made of X7R or C0G (NP0) materials. Note that the capacitors can be used in pairs: a capacitor with small capacitance (up to 100 pF) plus a capacitor with a larger capacitance (less than 1 nF). This configuration provides thorough EMI reduction for the entire frequency spectrum. Alternatively, a single capacitor of approximately 470 pF can be used if reducing the bill of materials is a priority.

EVALUATION BOARD SCHEMATICS AND ARTWORK

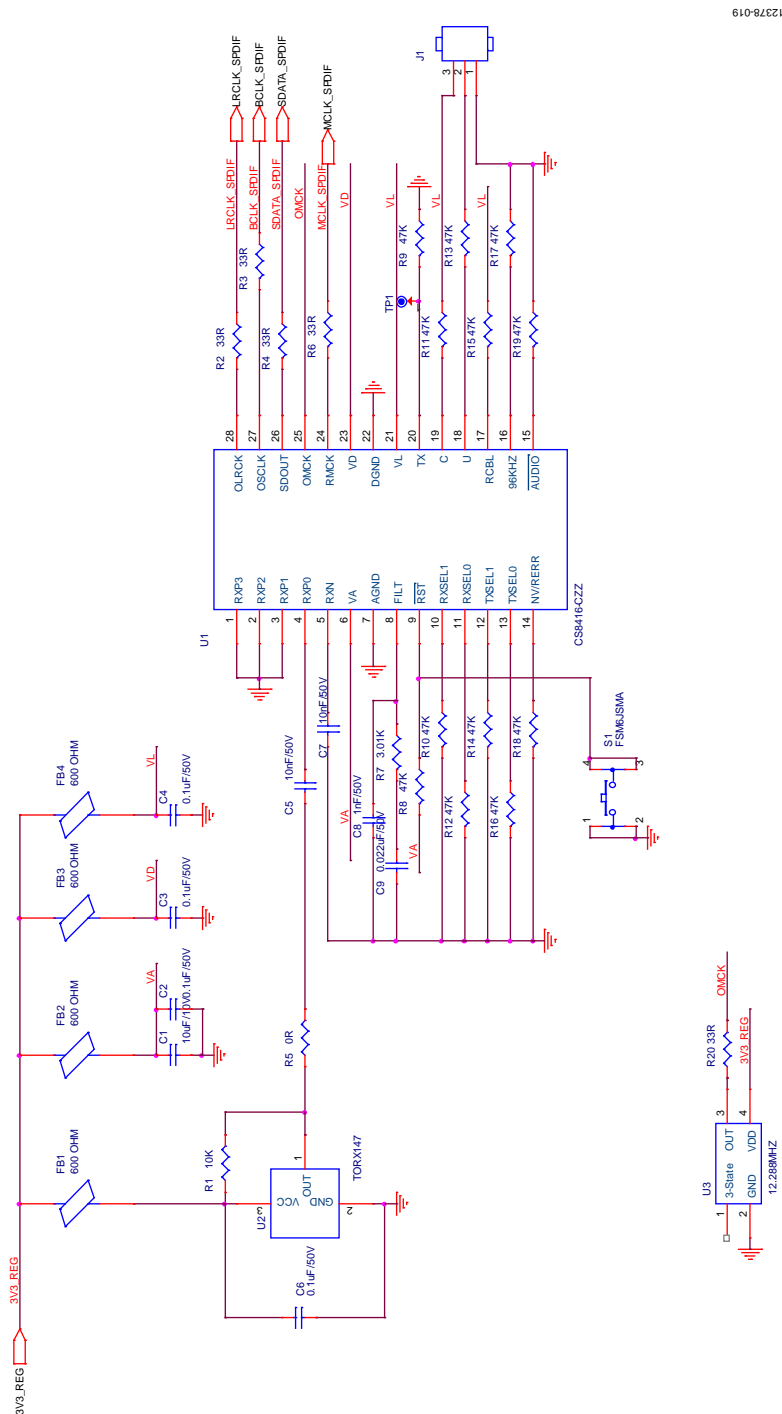


Figure 18. SSM4567Z Evaluation Board Schematic

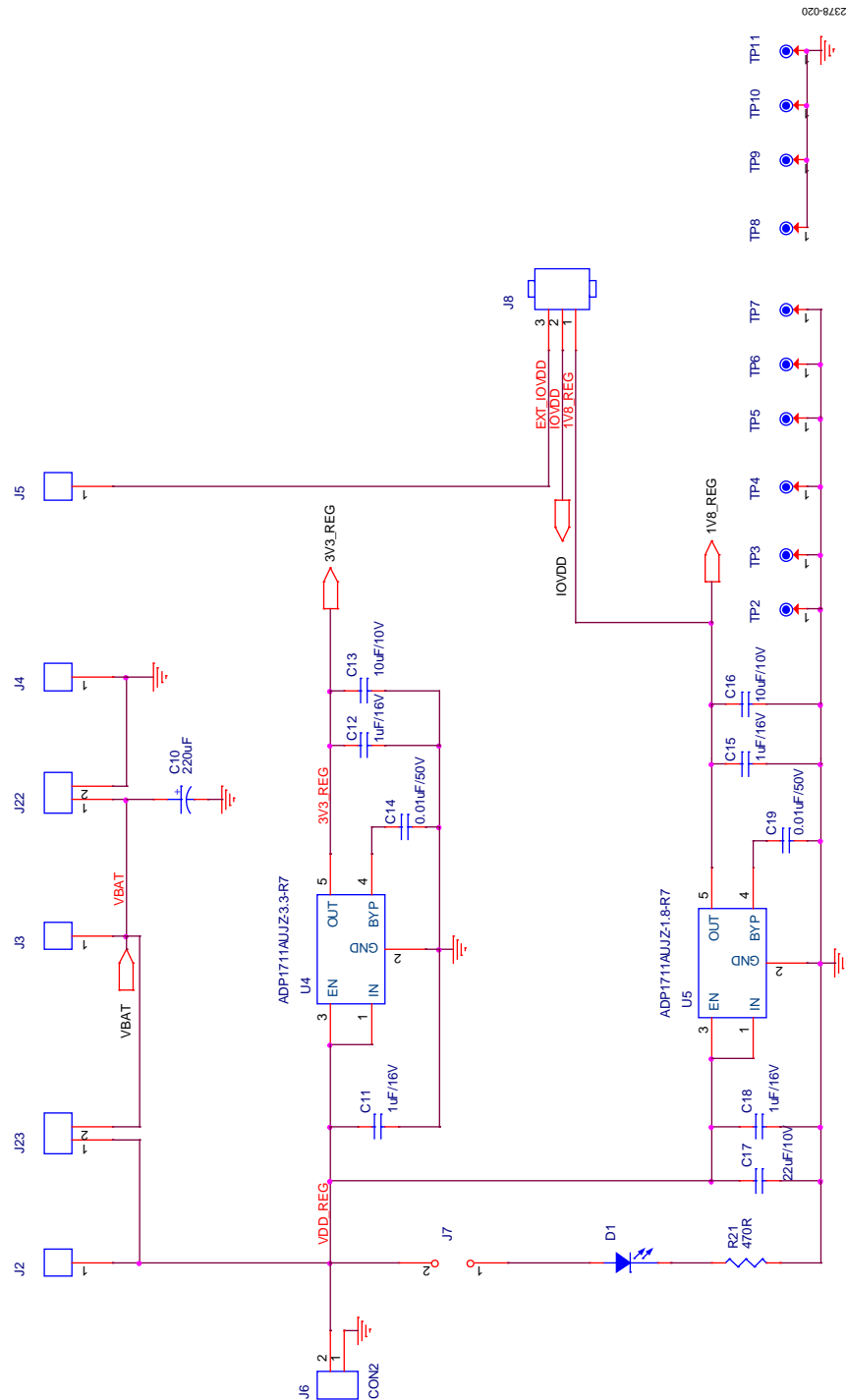


Figure 19. SSM4567Z Evaluation Board Schematic (Continued)

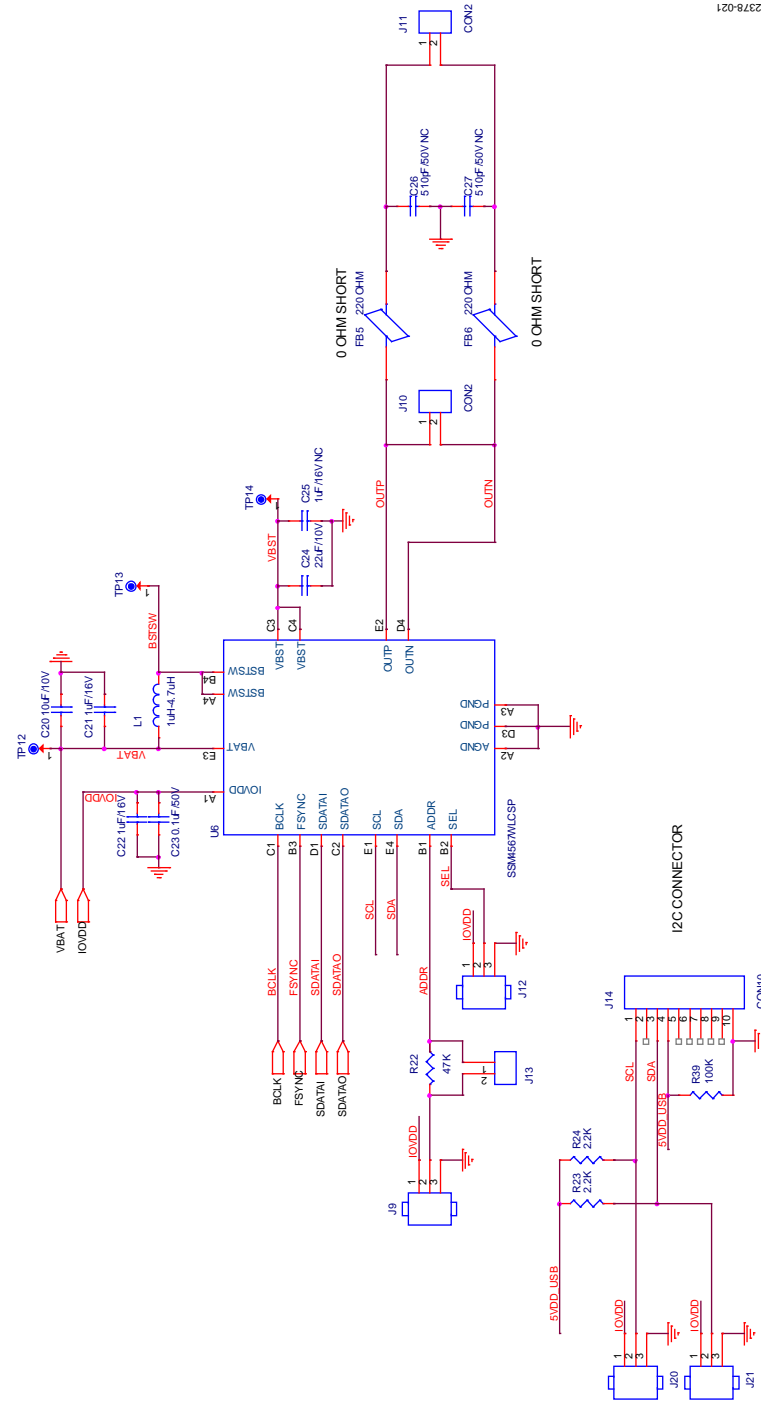
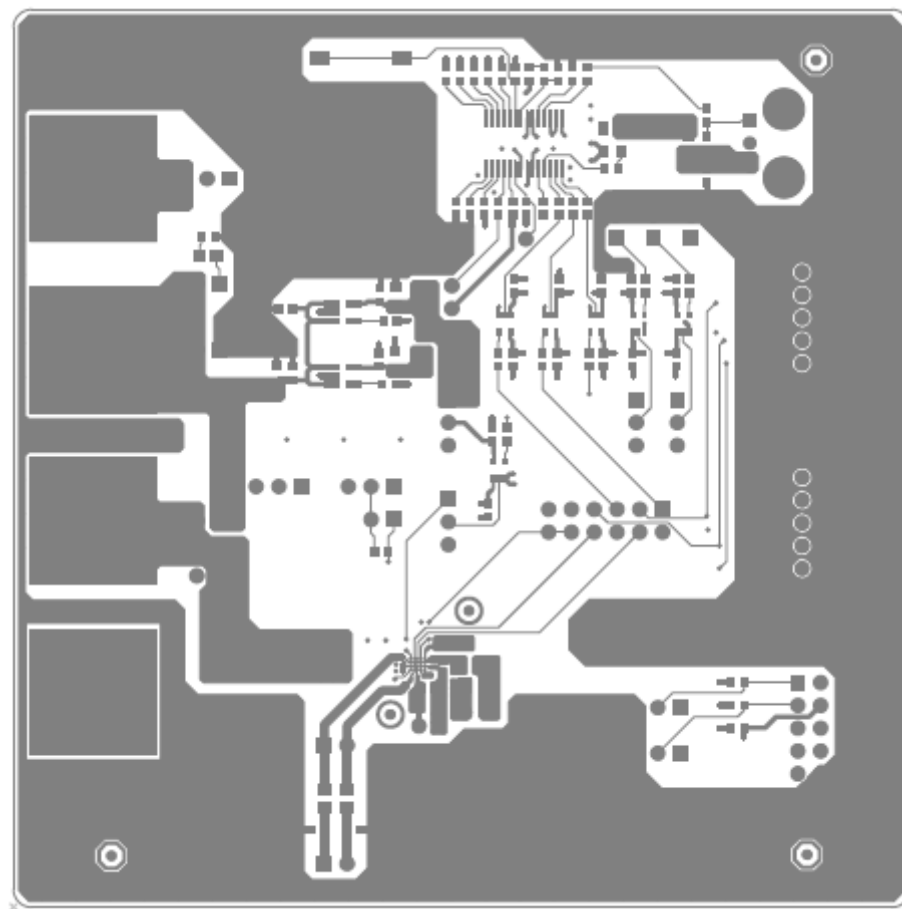


Figure 20. SSM4567 Evaluation Board Schematic (Continued)

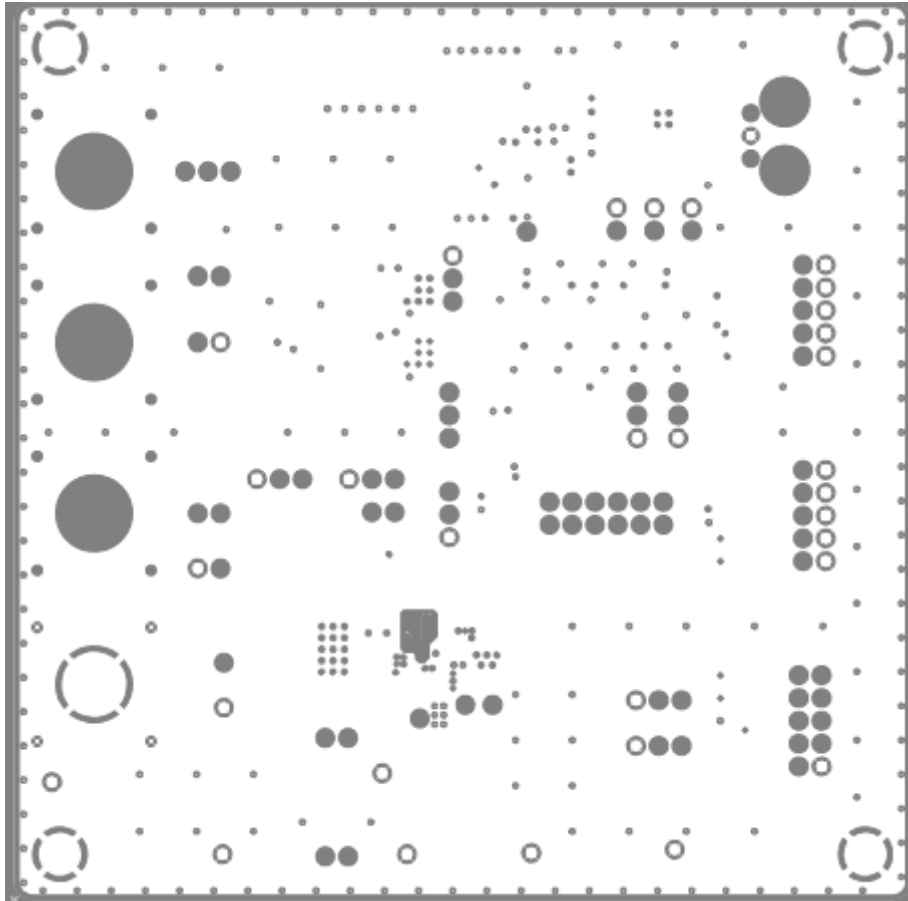


Figure 21. [SSM4567](#) Evaluation Board Schematic (Continued)



12379-023

Figure 22. Evaluation Board Layout, Primary Side (Layer 1)



12379-024

Figure 23. Evaluation Board Layout, Ground Plane (Layer 2)

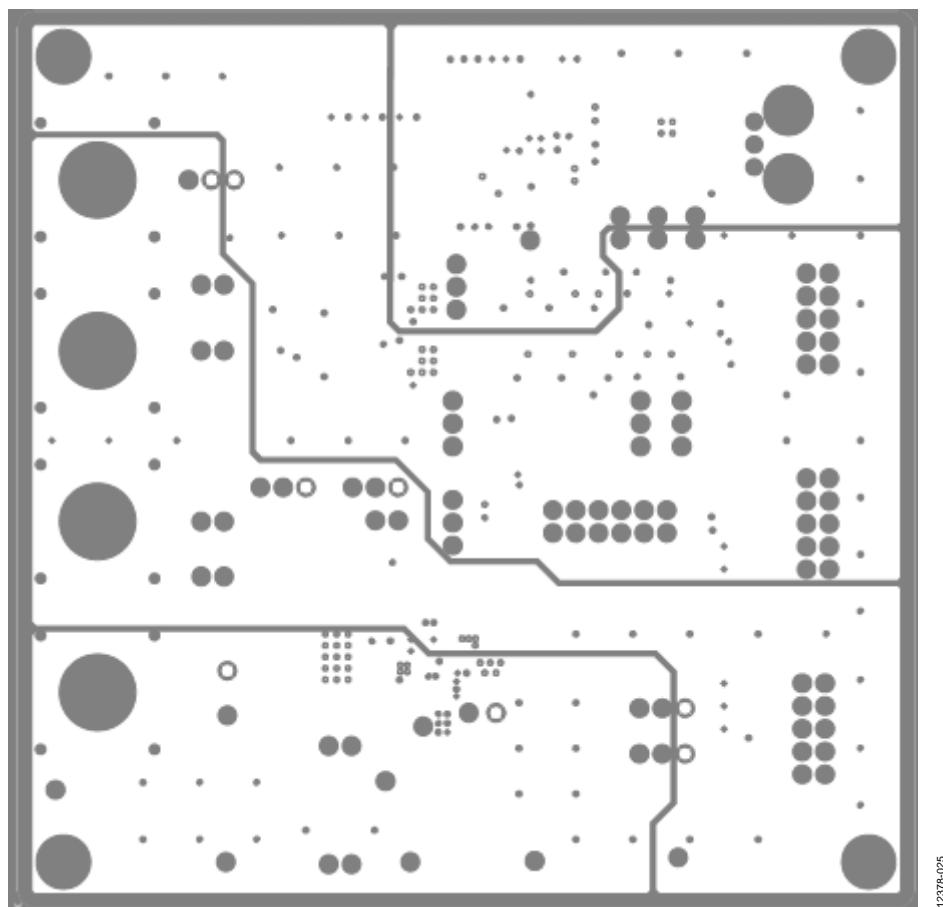
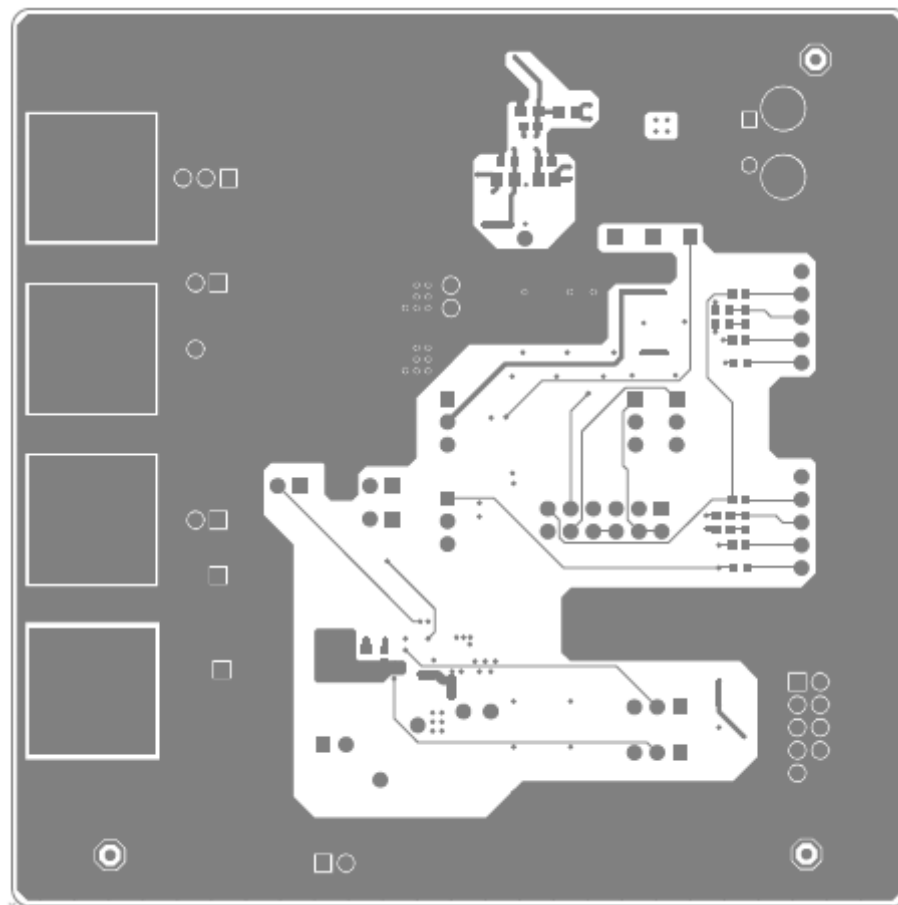
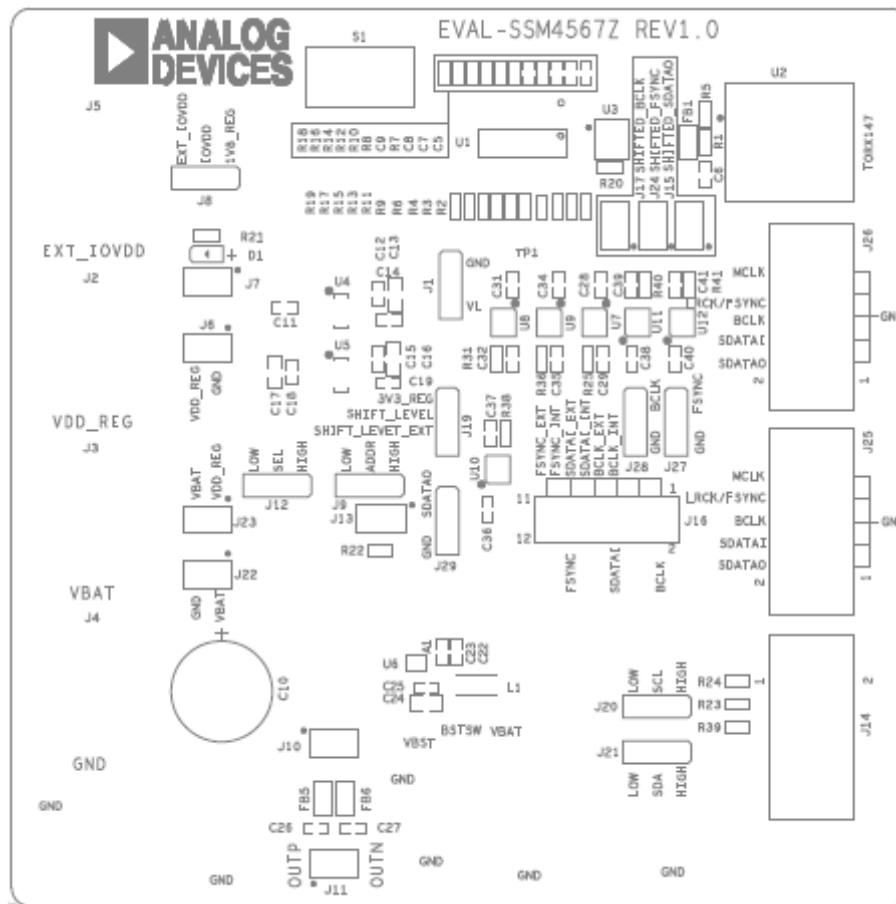


Figure 24. Evaluation Board Layout, Power Plane (Layer 3)



12375-026

Figure 25. Evaluation Board Layout, Secondary Side (Layer 4)



12378-027

Figure 26. Evaluation Board Layout, Top Silkscreen

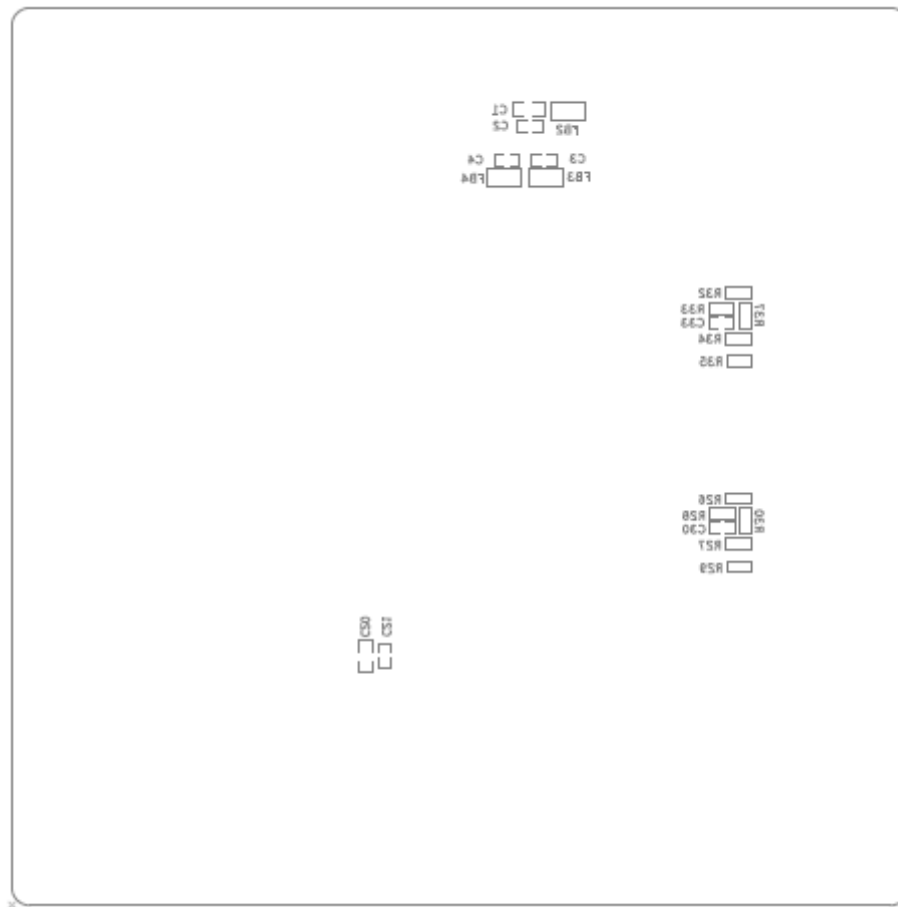


Figure 27. Evaluation Board Layout, Bottom Silkscreen

12278-028

ORDERING INFORMATION

BILL OF MATERIALS

Table 5.

Item	Qty	Reference Designator	Description	Manufacturer	Mfg Part Number
1	2	C17, C24	Multilayer ceramic 10 V X5R 22 μ F 0805	Taiyo Yuden	LMK212BJ226MG-T
2	4	C1, C13, C16, C20	Multilayer ceramic 10 V X5R 10 μ F 0805	Taiyo Yuden	LMK212BJ106KG-T
3	17	C2, C3, C4, C6, C23, C28, C29, C31, C32, C34, C35, C36, C37, C38, C39, C40, C41	Multilayer ceramic 16 V X7R 0.1 μ F 0603	Murata	GRM188R71C104KA01D
4	7	C11, C12, C15, C18, C21, C22, C25	Multilayer ceramic 16 V X7R 1.0 μ F 0603	Taiyo Yuden	EMK107B7105KA-T
5	4	C5, C7, C14, C19	Multilayer ceramic 50 V X7R 0.01 μ F 0603	Murata	GRM188R71H103KA01D
6	1	C9	Multilayer ceramic 50 V X7R 0.022 μ F 0603	Murata	GRM188R71H223KA01D
7	2	C30, C33	Multilayer ceramic 50 V NP0 10 pF 0603	TDK Corporation	C1608C0G1H100D
8	2	C26, C27	Multilayer ceramic 50 V NP0 510 pF 0603	Murata	GRM1885C1H511JA01D
9	1	C8	Multilayer ceramic 50 V X7R 1 nF 0603	Murata	GRM188R71H102KA01D
10	1	C10	Cap alum 100 μ F 50 V 20% radial	Panasonic EC	ECA-1HM101B
11	1	D1	LED 610 NM orn wtr clr 0805 SMD	Rohm Semiconductor	SML-210DTT86
12	10	J1, J8, J9, J12, J19, J20, J21, J27, J28, J29	Conn header .100" snl str	Sullins Electronics Corp	PRPC040SAAN-RC
13	10	J6, J10, J11, J22, J23, J7, J24, J13, J15, J17	Conn header .100" snl str	Sullins Electronics Corp	PRPC040SAAN-RC
14	4	J2, J3, J4, J5	Post binding grounded type nickel	Johnson/Emerson	111-2223-001
15	3	J14, J25, J26	Conn header 2.54 mm 10 POS gold	Sullins Electronics Corp	SBH11-PBPC-D05-ST-BK
16	1	J16	Conn header .100" dual str	Sullins Electronics Corp	PRPC040DAAN-RC
17	1	L1	2.2 μ H, 1.85 A, 20%	Vishay Dale	IFSC1008ABER2R2M01
18	4	FB1, FB2, FB3, FB4	Ferrite bead 600 Ω 0805	Taiyo Yuden	BK2125HM601-T
19	2	FB5, FB6	RES 0.0 Ω 1/8 W 0805 SMD	Panasonic EC	ERJ-6GEY0R00V
20	19	R2, R3, R4, R6, R20, R25, R26, R27, R28, R29, R31, R32, R33, R34, R35, R36, R38, R40, R41	RES 33.0 Ω 1/10 W 1% 0603 SMD	Panasonic EC	ERJ-3GEYJ330V
21	1	R21	RES 470 Ω 1/10 W 1% 0603 SMD	Panasonic EC	ERJ-3EKF4750V
22	1	R1	RES 10.0 K Ω 1/10 W 1% 0603 SMD	Panasonic EC	ERJ-3EKF1002V
23	1	R5	RES 0.0 Ω 1/10 W 0603 SMD	Panasonic EC	ERJ-3GEY0R00V
24	1	R7	RES 3.01 Ω 1/10 W 1% 0603 SMD	Panasonic EC	ERJ-3EKF3011V
25	13	R8, R9, R10, R11, R12, R13, R14, R15, R16, R17, R18, R19, R22	RES 47.0 K Ω 1/10 W 1% 0603 SMD	Panasonic EC	ERJ-3EKF4702V
26	2	R30, R37	RES 51.0 Ω 1/10 W 1% 0603 SMD	Panasonic EC	ERJ-3EKF51R0V
27	1	R39	RES 100 K Ω 1/10 W 1% 0603 SMD	Panasonic EC	ERJ-3EKF1003V
28	2	R23, R24	RES 2.20 K Ω 1/10 W 1% 0603 SMD	Panasonic EC	ERJ-3EKF2201V
29	1	S1	Switch tactile SPST-NO 0.05A 12 V	Tyco/Alcoswitch	FSM6J5MA
30	7	TP1, TP2, TP3, TP4, TP5, TP6, TP7	Test point PC mini .040"D black	Keystone Electronics	5001
31	3	TP12, TP13, TP14	Test point PC mini .040"D red	Keystone Electronics	5000
32	1	U2	Receiver module fiber optic	Toshiba	TORX147(F, T)
33	6	U7, U8, U9, U10, U11, U12	Translator 1-bit unidirect SC70-5	Fairchild Semiconductor	FXLP34P5X

Item	Qty	Reference Designator	Description	Manufacturer	Mfg Part Number
34	1	U5	Adjustable low dropout voltage regulator	Analog Devices	ADP1711AUJZ-1.8-R7
35	1	U1	192 kHz AES3/SPDIF receiver	Cirrus Logic	CS8416-CZZ
36	1	U4	Adjustable low dropout voltage regulator	Analog Devices	ADP1711AUJZ-3.3-R7
37	1	U3	Oscillator 12.288 MHz 3.3 V SMD	Abracon Corp	ASEP-BLANK
38	1	U6	SSM4567 WLCSP	Analog Devices	SSM4567CBZ-RL

NOTES

I²C refers to a communications protocol originally developed by Philips Semiconductors (now NXP Semiconductors).



ESD Caution

ESD (electrostatic discharge) sensitive device. Charged devices and circuit boards can discharge without detection. Although this product features patented or proprietary protection circuitry, damage may occur on devices subjected to high energy ESD. Therefore, proper ESD precautions should be taken to avoid performance degradation or loss of functionality.

Legal Terms and Conditions

By using the evaluation board discussed herein (together with any tools, components documentation or support materials, the "Evaluation Board"), you are agreeing to be bound by the terms and conditions set forth below ("Agreement") unless you have purchased the Evaluation Board, in which case the Analog Devices Standard Terms and Conditions of Sale shall govern. Do not use the Evaluation Board until you have read and agreed to the Agreement. Your use of the Evaluation Board shall signify your acceptance of the Agreement. This Agreement is made by and between you ("Customer") and Analog Devices, Inc. ("ADI"), with its principal place of business at One Technology Way, Norwood, MA 02062, USA. Subject to the terms and conditions of the Agreement, ADI hereby grants to Customer a free, limited, personal, temporary, non-exclusive, non-sublicensable, non-transferable license to use the Evaluation Board FOR EVALUATION PURPOSES ONLY. Customer understands and agrees that the Evaluation Board is provided for the sole and exclusive purpose referenced above, and agrees not to use the Evaluation Board for any other purpose. Furthermore, the license granted is expressly made subject to the following additional limitations: Customer shall not (i) rent, lease, display, sell, transfer, assign, sublicense, or distribute the Evaluation Board; and (ii) permit any Third Party to access the Evaluation Board. As used herein, the term "Third Party" includes any entity other than ADI, Customer, their employees, affiliates and in-house consultants. The Evaluation Board is NOT sold to Customer; all rights not expressly granted herein, including ownership of the Evaluation Board, are reserved by ADI. CONFIDENTIALITY. This Agreement and the Evaluation Board shall all be considered the confidential and proprietary information of ADI. Customer may not disclose or transfer any portion of the Evaluation Board to any other party for any reason. Upon discontinuation of use of the Evaluation Board or termination of this Agreement, Customer agrees to promptly return the Evaluation Board to ADI. ADDITIONAL RESTRICTIONS. Customer may not disassemble, decompile or reverse engineer chips on the Evaluation Board. Customer shall inform ADI of any occurred damages or any modifications or alterations it makes to the Evaluation Board, including but not limited to soldering or any other activity that affects the material content of the Evaluation Board. Modifications to the Evaluation Board must comply with applicable law, including but not limited to the RoHS Directive. TERMINATION. ADI may terminate this Agreement at any time upon giving written notice to Customer. Customer agrees to return to ADI the Evaluation Board at that time. LIMITATION OF LIABILITY. THE EVALUATION BOARD PROVIDED HEREUNDER IS PROVIDED "AS IS" AND ADI MAKES NO WARRANTIES OR REPRESENTATIONS OF ANY KIND WITH RESPECT TO IT. ADI SPECIFICALLY DISCLAIMS ANY REPRESENTATIONS, ENDORSEMENTS, GUARANTEES, OR WARRANTIES, EXPRESS OR IMPLIED, RELATED TO THE EVALUATION BOARD INCLUDING, BUT NOT LIMITED TO, THE IMPLIED WARRANTY OF MERCHANTABILITY, TITLE, FITNESS FOR A PARTICULAR PURPOSE OR NON-INFRINGEMENT OF INTELLECTUAL PROPERTY RIGHTS. IN NO EVENT WILL ADI AND ITS LICENSORS BE LIABLE FOR ANY INCIDENTAL, SPECIAL, INDIRECT, OR CONSEQUENTIAL DAMAGES RESULTING FROM CUSTOMER'S POSSESSION OR USE OF THE EVALUATION BOARD, INCLUDING BUT NOT LIMITED TO LOST PROFITS, DELAY COSTS, LABOR COSTS OR LOSS OF GOODWILL. ADI'S TOTAL LIABILITY FROM ANY AND ALL CAUSES SHALL BE LIMITED TO THE AMOUNT OF ONE HUNDRED US DOLLARS (\$100.00). EXPORT. Customer agrees that it will not directly or indirectly export the Evaluation Board to another country, and that it will comply with all applicable United States federal laws and regulations relating to exports. GOVERNING LAW. This Agreement shall be governed by and construed in accordance with the substantive laws of the Commonwealth of Massachusetts (excluding conflict of law rules). Any legal action regarding this Agreement will be heard in the state or federal courts having jurisdiction in Suffolk County, Massachusetts, and Customer hereby submits to the personal jurisdiction and venue of such courts. The United Nations Convention on Contracts for the International Sale of Goods shall not apply to this Agreement and is expressly disclaimed.

©2014 Analog Devices, Inc. All rights reserved. Trademarks and registered trademarks are the property of their respective owners.
UG12378-0-6/14(0)



**ANALOG
DEVICES**

www.analog.com