

MATERIAL

Thermoplastic elastomer (TPE), black colour.

Steel internal return spring (RHMA-23).

COVERING CAPS

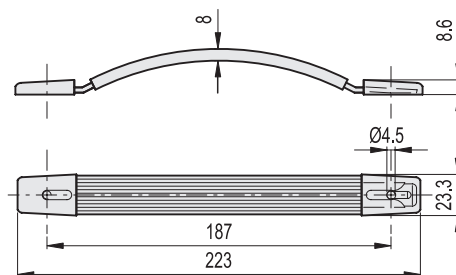
- RHMA-20 / RHMA-23: nickel-plated steel.
- RHMA-25 / RHMA-37: glass-fibre reinforced polyamide based (PA) technopolymer.

STANDARD EXECUTIONS

- **RHMA-20**: back mounting, holes for self-tapping screws (DIN 7981) for plate.
- **RHMA-23**: front mounting, holes for M4 countersunk-head screws.
- **RHMA-25**: front mounting, holes for M4 countersunk-head screws.
- **RHMA-37**: front mounting, holes for M5 countersunk-head screws.

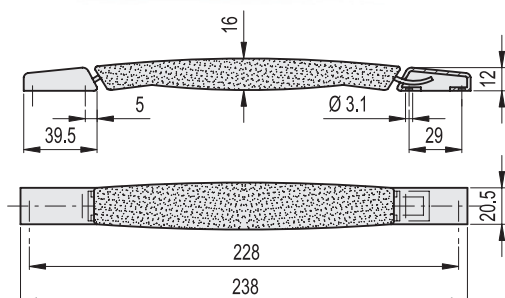
APPLICATIONS

Suitable to be assembled on instruments, suitcases and similar applications.

**RHMA-23.205**

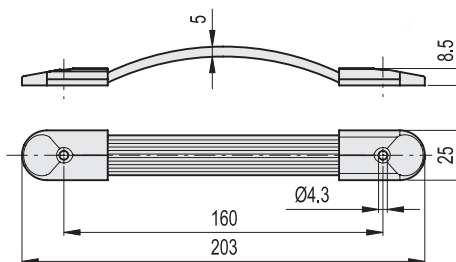
METRIC

Code	⚖
RHMA-23.205.84	65

**RHMA-20**

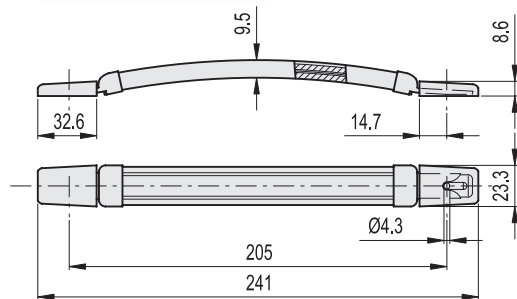
METRIC

Code	⚖
RHMA-20.228.84	90

**RHMA-25**

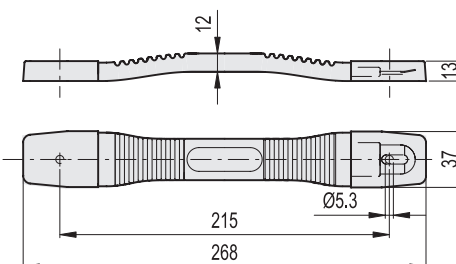
METRIC

Code	⚖
RHMA-25.160.84	26

**RHMA-23.187**

METRIC

Code	⚖
RHMA-23.187.84	60

**RHMA-37**

METRIC

Code	⚖
RHMA-37.215.84	136

