

1

2

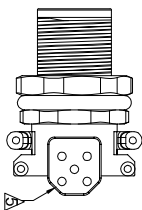
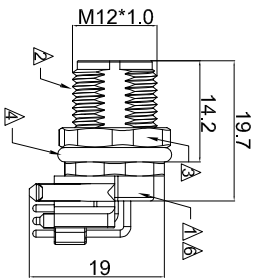
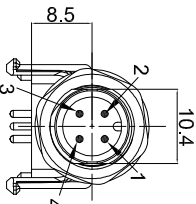
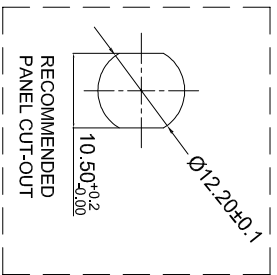
3

4

5

6

7



Part Number	Contacts	Rated Voltage		Rated Current
		AC	D/C	
A-M12-04-MAMA-GTB1		250V	250V	4A
A-M12-05-MAMA-GTB1		60V	60V	4A
A-M12-08-MAMA-GTB1		30V	30V	2A
A-M12-12-MAMA-GTB1		30V	30V	1.5A
A-M12-04-MAMD-GTB1		250V	250V	4A
③ A-M12-05-MAMB-GTB1		60V	60V	4A

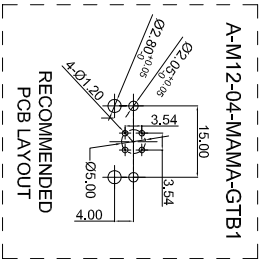
② Notes:

1. Waterproof connector rating is IP67/68
2. Insulation Resistance: >100MΩ
3. Contact Resistance: ≤10mΩ
4. Mating Cycle: 100 times Min, 500 times Max.
5. Operating temperature: -25°C ~ +85°C
- ① 6. Unshielded

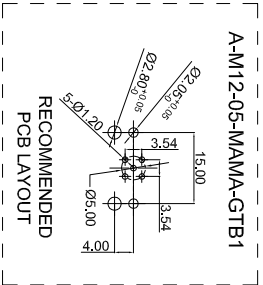
	BLACK GLUE A/B (ETHOXYLINE RESIN)	2	9
	NYLON BLACK SUPPORT	1	PCS
	O-RING BLACK SILICONE Ø10X1.5mm	1	PCS
	M12 NUT BRASS PLATING NI L*W=2.8*1.5mm	1	PCS
	M12 METAL-HOUSING BRASS PLATING NICKEL L=16.2mm	1	PCS
	M12 MALE Connector UL94V-0 Black PCB PIN 10" Gold plated	1	SET
ITEM	SPECIFICATION	QTY	UNIT

E

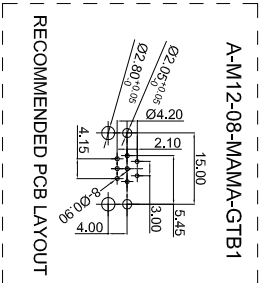
A-M12-04-MAMA-GTB1



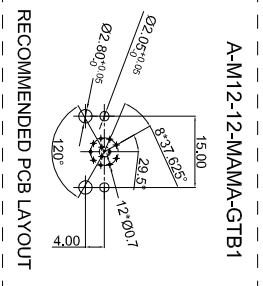
A-M12-05-MAMA-GTB1



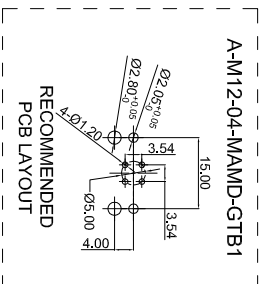
A-M12-08-MAMA-GTB1



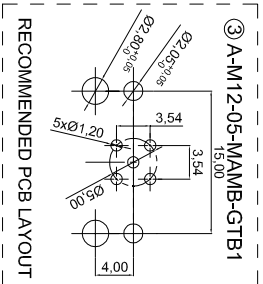
A-M12-12-MAMA-GTB1



A-M12-04-MAMD-GTB1



③ A-M12-05-MAMB-GTB1



RoHS compliant

Unit: mm

Scale	Free
TOLERANCE	
.X	±0.5
.XX	±0.20
DIM	TOL
X.°	±2.0°
.X°	±1.0°
Angle	TOL

Id.	Modification	Date	Name
①	Update the notes	26.04.2018	Segal
②	Remove "resistance many oils and chemical" from notes	06.09.2018	Amy
③	Add B code version into drawing	01.11.2019	Amy

Date	Name
12.07.2018	Segal
01.11.2019	Amy

Customer-No.	Drawing-No.	Replace	Sheet
ASSMANN WSW-No.	A-M12-xx-MAMX-GTB1	ASS 8051 CO	rev03

G

G

H

H

1

2

3

4

5

6

7

ASSMANN components

ASS 8051 CO

rev03

SV4471